



مجمع صحارى  
**SAHARA COMPLEX**  
أيقونة العبور إلى الشارقة THE ICONIC GATEWAY TO SHARJAH

# SAHARA TOWER 5



A photograph of two young children, a girl and a boy, sliding down a large orange water slide. They are both smiling and looking towards the camera. The girl is on the left, wearing a white dress, and the boy is on the right, wearing a red and white striped shirt and white shorts. The background is a bright, sunny day with some greenery visible.

## SHARJAH

A city steeped in heritage & history, captivatingly narrated through 20 museums, restored art, heritage sites, cultural festivals and a traditional lifestyle.

A city that continues to uphold Islamic values and preserve the time-honoured traditions of the region; standing at the threshold of a glorious past and a promising future.

Under the leadership of His Highness Sheikh Dr. Sultan Bin Mohammed Al Qasimi, Member of the UAE Supreme Council and Ruler of Sharjah, the Emirate of Sharjah has become a prominent preserver of the country's heritage and was named the

‘Cultural Capital of the Arab World’  
by UNESCO in 1998 and the ‘Capital of Islamic Culture’ in 2014.





One of the largest cities in the United Arab Emirates, it is also home to several leading universities in the region.

Intellectual & social development  
is at the heart of the Emirate, along with a safe, clean and multicultural environment.

Sharjah. A true beacon of progress and Arabian hospitality.





The strands of pioneering heritage and shared vision weaved the formation of Al Thuriah in 1996.

The core values of **professionalism, efficiency & quality**  
forged the pillars over which the company was built - and its success architected.

Upon inception, Al Thuriah was mainly engaged in the construction and development of small plots and low-storey buildings. This journey from humble beginnings went on to cross many milestones.

Today, Al Thuriah is a reputable real estate venture offering a full spectrum of realty services -  
from **development & construction to sales & management**  
of high-end residential communities, commercial towers, hotels, shopping malls, villas, schools, warehouses and mosques.

Al Thuriah's projects stand testament to its **commitment & integrity.**  
Every project rising as a landmark of success and guiding Al Thuriah as one of the  
**leading real estate companies** in the UAE.

**established**  
**solid trusted**















-  SAHARA TOWER 5
-  EDUCATION
-  HEALTH CARE
-  BUSINESS
-  AIRPORTS
-  ENTERTAINMENT

-  SHEIKH ZAYED ROAD
-  AL ITTIHAD ROAD
-  SHEIKH MOHAMMED BIN ZAYED ROAD
-  EMIRATES ROAD
-  ROAD 66
-  MALIHA ROAD



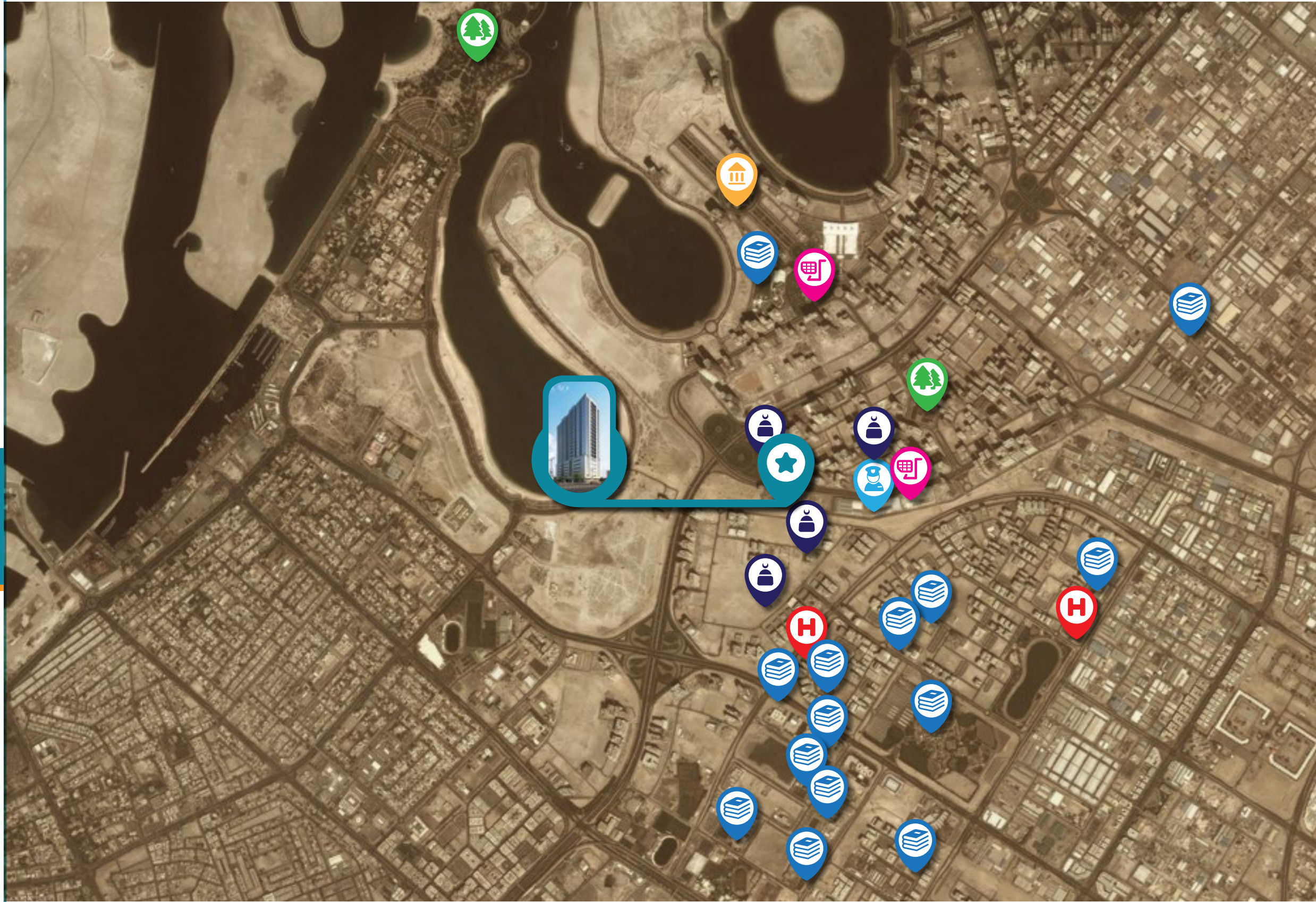
## LOCATION: OUTER RADIUS

Sahara Tower 5 is strategically situated to offer proximity to:

- Dubai International Airport
- Sharjah International Airport
- The renowned American University of Sharjah
- Al Qasba - an art, culture and leisure avenue
- Al Majaz Waterfront - the family-friendly zone
- A multitude of healthcare, educational and business districts
- Key routes to connect to the other Emirates







-  SAHARA TOWER 5
-  EDUCATION
-  HOSPITALS
-  BUSINESS
-  SHOPPING MALLS
-  PARKS
-  POLICE STATION
-  MOSQUES



## LOCATION: INNER RADIUS

Conveniently-located, Sahara Tower 5's immediate neighbourhood includes the following:

- World-class educational institutions like Sharjah College and Victoria International School
- NMC Hospital
- Zulekha Hospital
- Sahara Centre mall
- Beach parks
- Several mosques within walking distance









أيقونة العبور إلى الشارقة

THE ICONIC GATEWAY TO SHARJAH











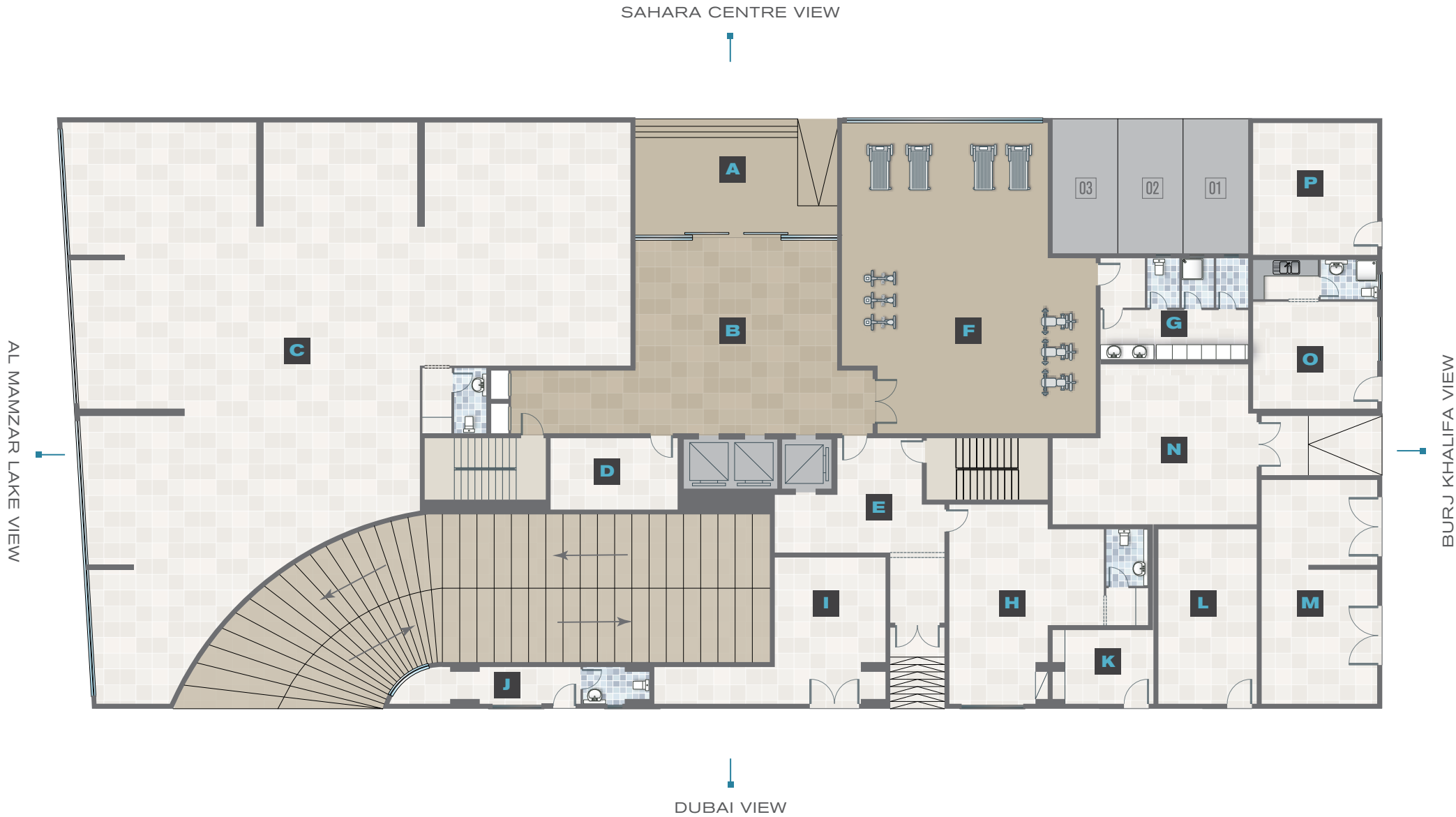


# SAHARA TOWER5

## GROUND FLOOR

### LEGEND

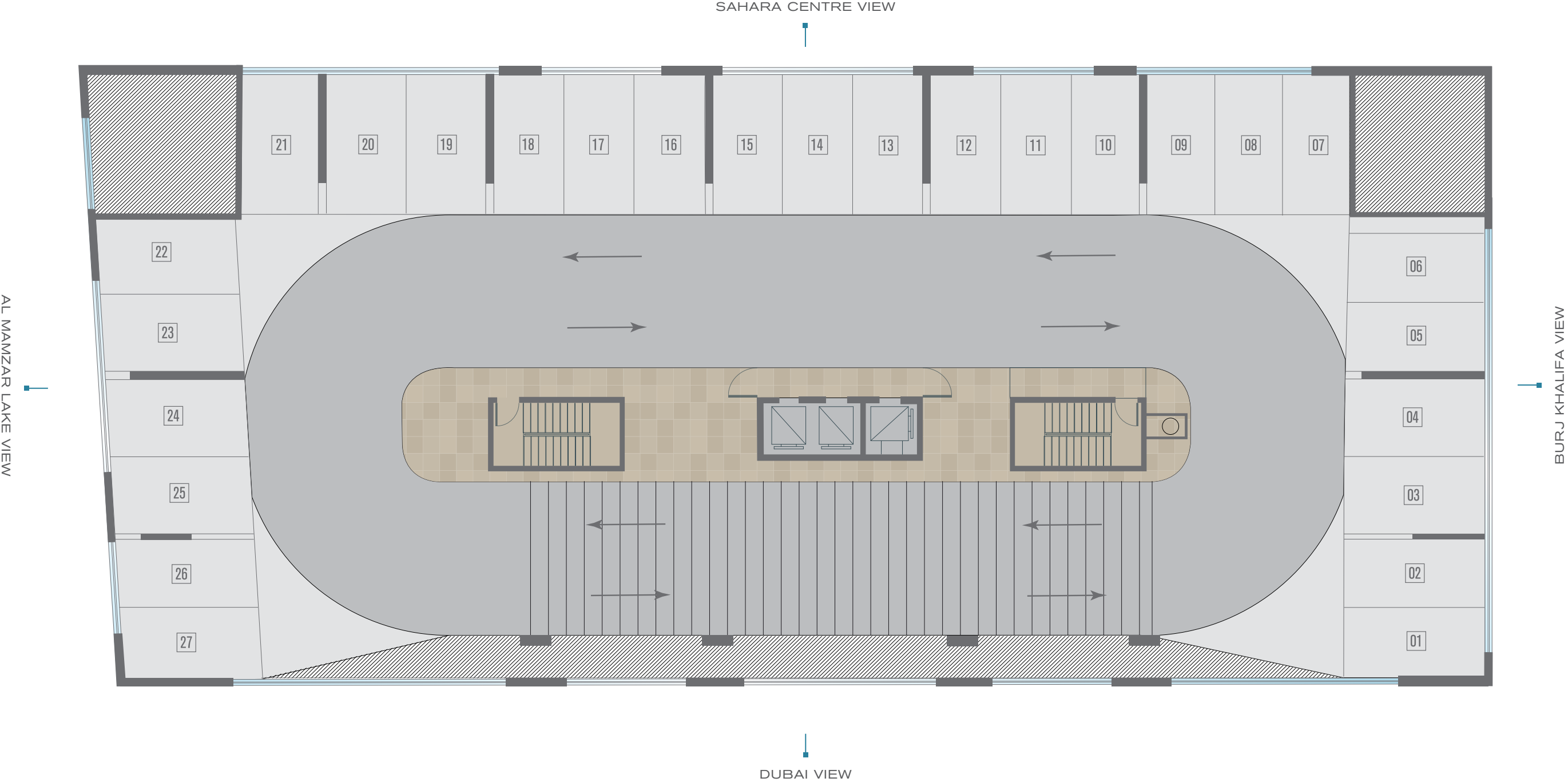
- A** ENTRANCE
- B** MAIN LOBBY
- C** SHOWROOM
- D** OFFICE
- E** LOBBY
- F** GYMNASIUM
- G** SHOWER & CHANGING ROOM
- H** FACILITY MANAGEMENT OFFICE
- I** FILTER ROOM
- J** CONTROL ROOM
- K** TELEPHONE ROOM
- L** ELECTRICAL ROOM
- M** SUB-STATION ROOM
- N** GARBAGE ROOM
- O** WATCHMAN ROOM
- P** PUMP ROOM





# SAHARA TOWER5

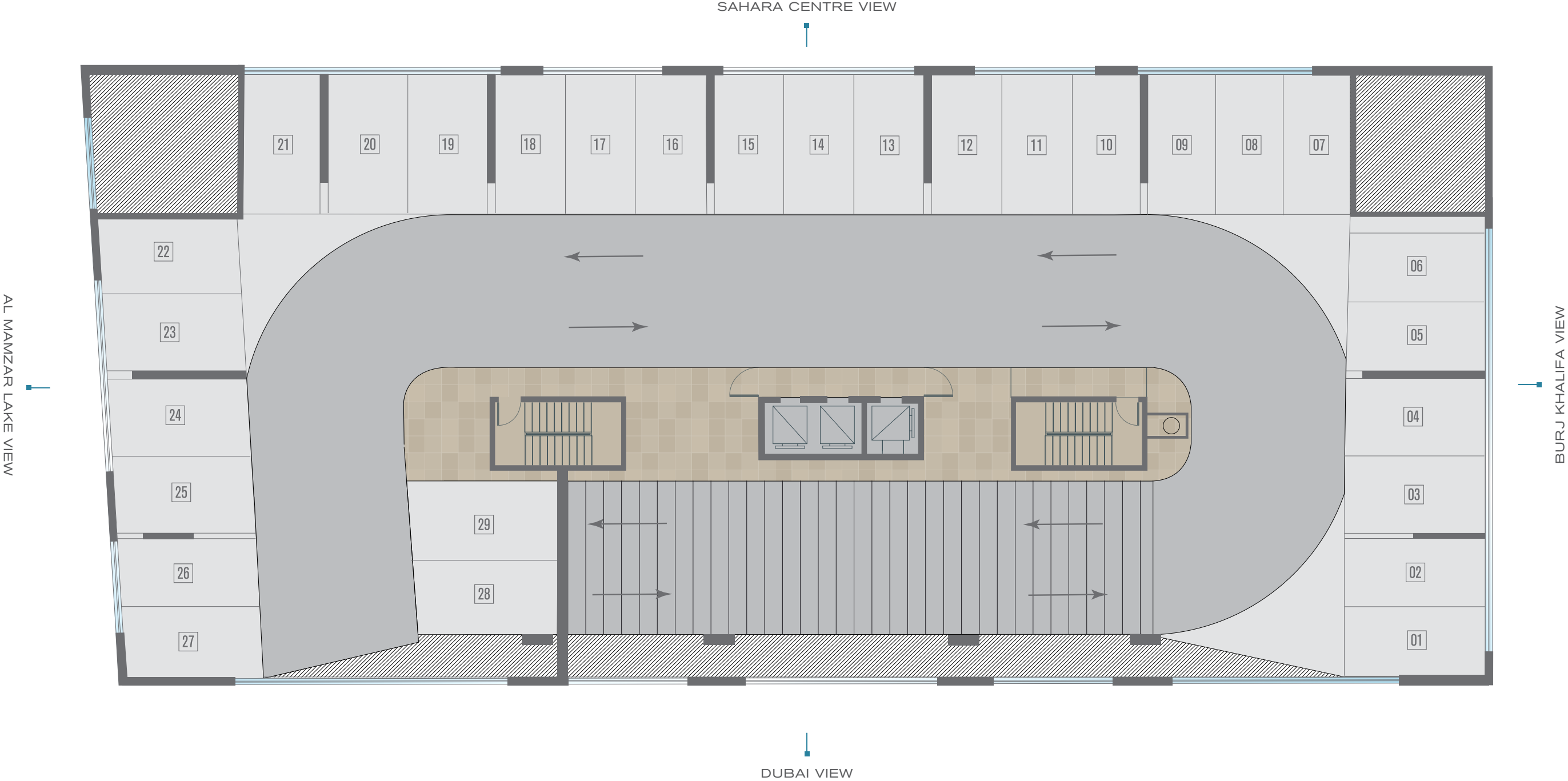
## PARKING FLOOR 1, 2, 3, 4





SAHARA TOWER5

PARKING FLOOR  
5



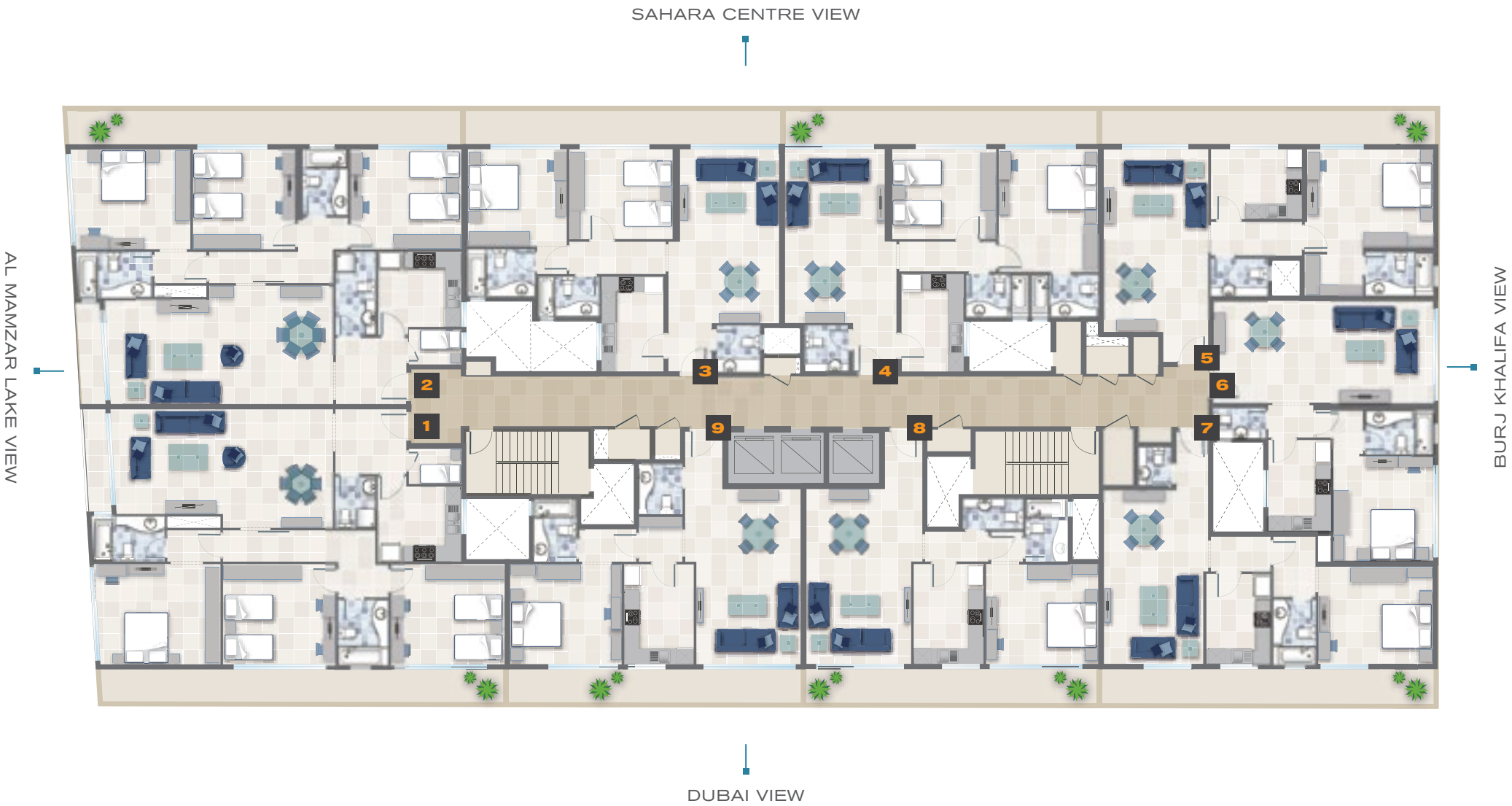


# SAHARA TOWER5

## FLOOR PLAN 6

LEGEND

FLAT No.	AREA	TERRACE AREA
FLAT 1	2,080 SQ.FT	250 SQ.FT
FLAT 2	2,120 SQ.FT	250 SQ.FT
FLAT 3	1,330 SQ.FT	200 SQ.FT
FLAT 4	1,370 SQ.FT	200 SQ.FT
FLAT 5	1,165 SQ.FT	200 SQ.FT
FLAT 6	1,065 SQ.FT	N/A
FLAT 7	1,065 SQ.FT	200 SQ.FT
FLAT 8	1,065 SQ.FT	200 SQ.FT
FLAT 9	1,065 SQ.FT	200 SQ.FT





SAHARA TOWER5

TYPICAL FLOOR PLAN  
7 - 20

LEGEND  
AREA

FLAT No.

FLAT 1	2,080 SQ.FT
FLAT 2	2,120 SQ.FT
FLAT 3	1,330 SQ.FT
FLAT 4	1,370 SQ.FT
FLAT 5	1,165 SQ.FT
FLAT 6	1,065 SQ.FT
FLAT 7	1,065 SQ.FT
FLAT 8	1,065 SQ.FT
FLAT 9	1,065 SQ.FT

SAHARA CENTRE VIEW



BURJ KHALIFA VIEW



DUBAI VIEW



AL MANZAR LAKE VIEW









FLAT 1  
3 BEDROOM FLAT



LEGEND

A	LIVING / DINING	900 x 470
B	MASTER BEDROOM	490 x 390
C	BEDROOM - 1	450 x 400
D	BEDROOM - 2	460 x 400
E	KITCHEN	340 x 300
F	MASTER BATHROOM	290 x 180
G	BATHROOM	260 x 200
H	GUEST TOILET	200 x 160
I	MAID ROOM	210 x 145
J	LOBBY	280 x 260
K	BALCONY	410 x 110

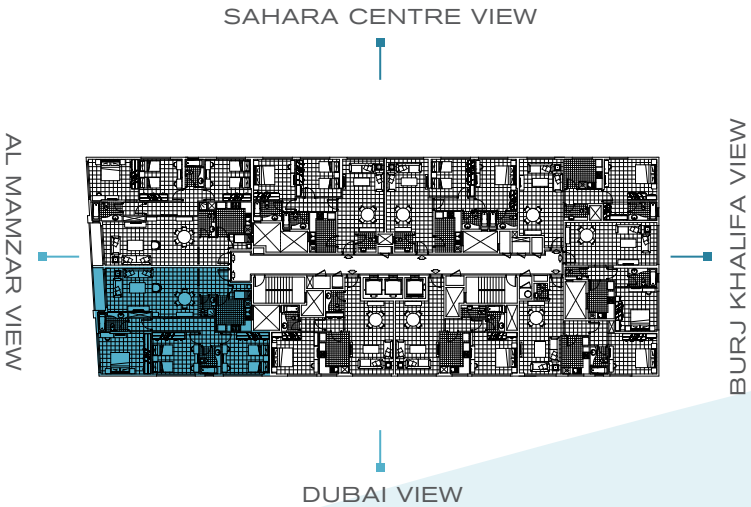
TOTAL AREA - 2,080 SQ FT      193 SQ M

الشقة 1 - تفاصيل الشقة بثلاث غرف نوم:

قاعة جلوس وطعام (صالون وسفرة) بشرقة مع حمام للضيوف، غرفة نوم رئيسية مع حمامها الخاص، غرفة نوم ثانية، غرفة نوم ثالثة، مع حمام خارجي لغرفتي النوم، مطبخ مجهز بالخزانين، بالإضافة إلى غرفة للخادمة.

FLAT 1 - THREE BEDROOM CONSISTS OF:

One master bedroom with an attached bathroom, two bedrooms with a communal bathroom in between them, a dining area interconnected with the living room and balcony, a separate kitchen next to a maid's room and a guest toilet at the lobby.





SAHARA TOWER5

FLAT 2  
3 BEDROOM FLAT

LEGEND

A	LIVING / DINING	920 x 470
B	MASTER BEDROOM	480 x 400
C	BEDROOM - 1	410 x 400
D	BEDROOM - 2	440 x 400
E	KITCHEN	340 x 300
F	MASTER BATHROOM	300 x 180
G	BATHROOM	260 x 180
H	GUEST TOILET	330 x 160
I	MAID ROOM	210 x 140
J	LOBBY	280 x 270
K	BALCONY	410 x 110

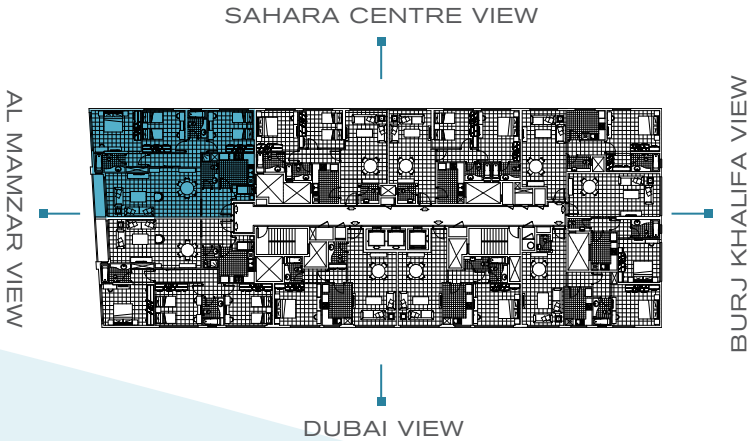
TOTAL AREA - 2,120 SQ FT      197 SQ M

الشقة ٢ - تفاصيل الشقة بثلاث غرف نوم:

قاعة جلوس وطعام (صالون وسفرة) بشرقة مع حمام للضيوف، غرفة نوم رئيسية مع حمامها الخاص، غرفة نوم ثانية، غرفة نوم ثالثة، مع حمام خارجي لغرفتي النوم، مطبخ مجهز بالخرائن، بالإضافة إلى غرفة للخادمة.

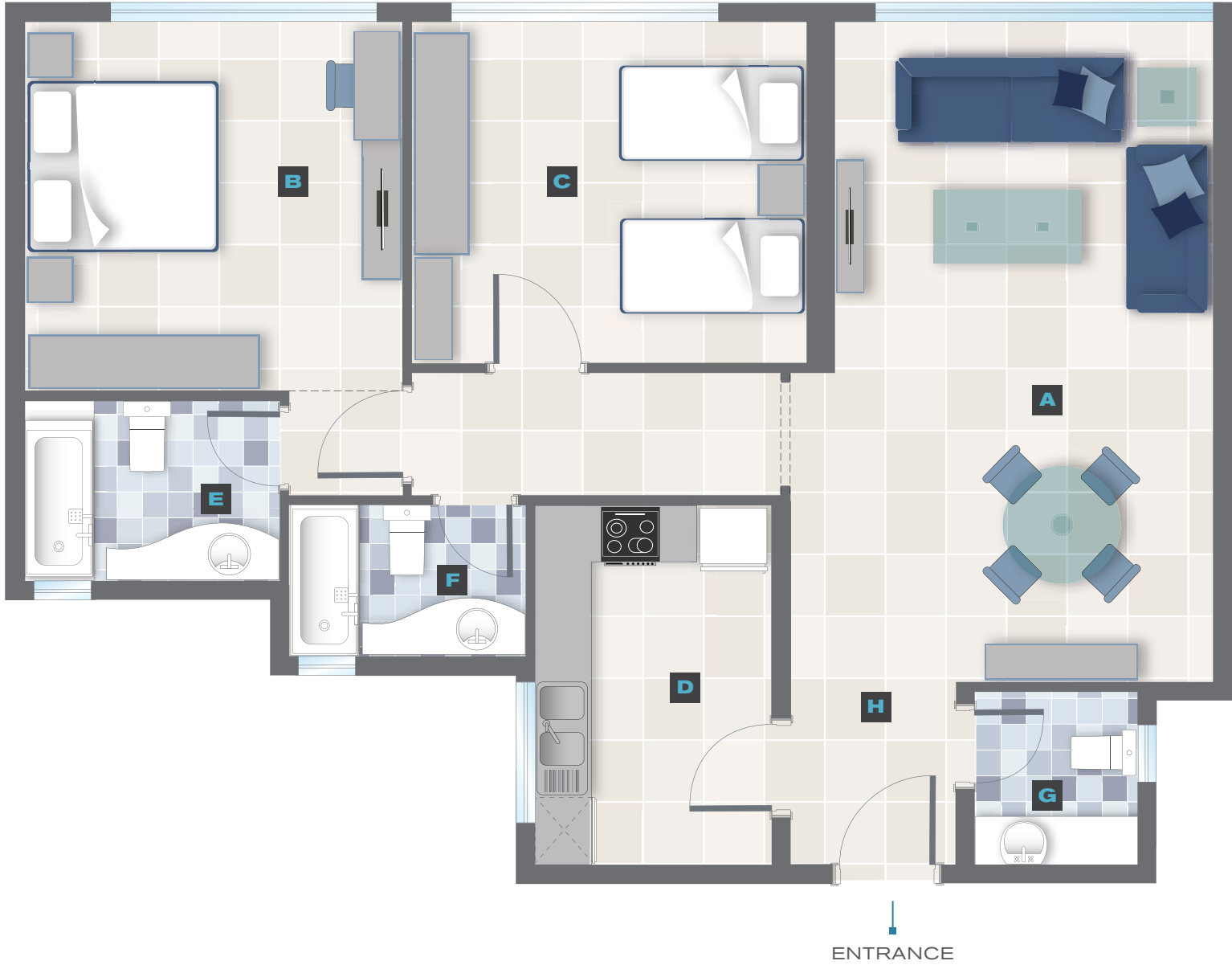
FLAT 2 - THREE BEDROOM CONSISTS OF:

One master bedroom with an attached bathroom, two bedrooms with a communal bathroom in between them, a living room with balcony interconnected with the dining area, a separate kitchen next to a maid's room and a guest toilet at the lobby.





FLAT 3  
2 BEDROOM FLAT



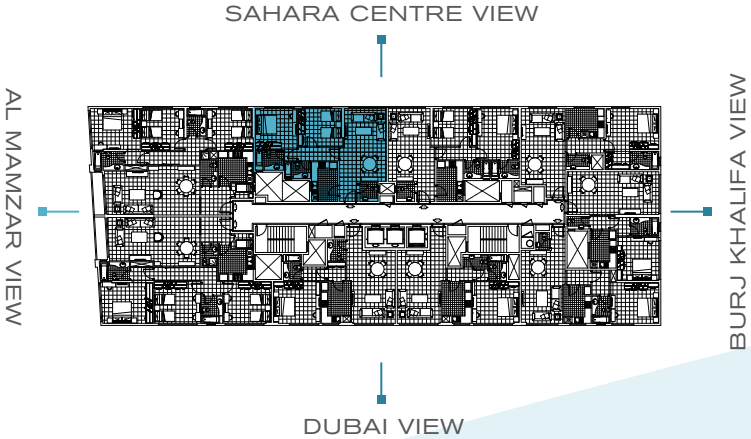
LEGEND

A	LIVING / DINING ROOM	700 x 450
B	MASTER BEDROOM	400 x 390
C	BEDROOM	420 x 360
D	KITCHEN	380 x 250
E	MASTER BATHROOM	270 x 190
F	BATHROOM	250 x 160
G	GUEST TOILET	185 x 175
H	LOBBY	190 x 180

TOTAL AREA - 1,330 SQ FT      124 SQ M

الشقة ٣ - تفاصيل الشقة بغرفتي نوم:  
قاعة جلوس وطعام (صالون وسفرة) مع حمام للضيوف، غرفة نوم رئيسية مع حمامها الخاص، غرفة نوم ثانية مع حمام خارجي، مطبخ مجهز بالخرائن.

FLAT 3 - TWO BEDROOM CONSISTS OF:  
One master bedroom with an attached bathroom, another bedroom opposite a communal bathroom, a dining area interconnected with the living room, a separate kitchen and a guest toilet at the lobby.



# SAHARA TOWER5

## FLAT 4 2 BEDROOM FLAT

### LEGEND

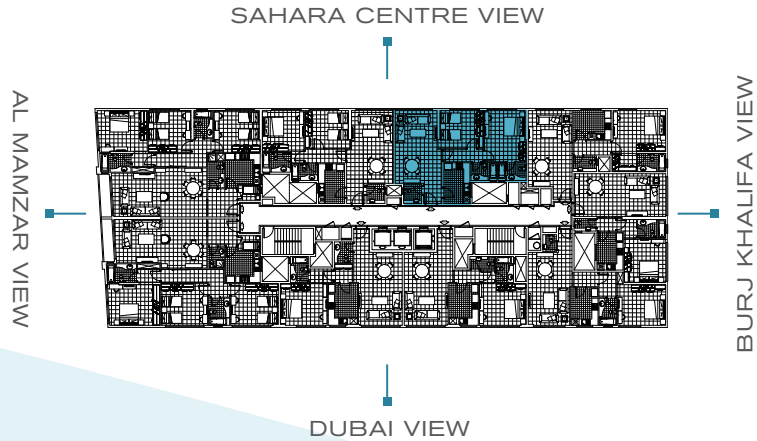
<b>A</b>	LIVING / DINING ROOM	700 x 450
<b>B</b>	MASTER BEDROOM	490 x 390
<b>C</b>	BEDROOM	420 x 360
<b>D</b>	KITCHEN	390 x 250
<b>E</b>	MASTER BATHROOM	270 x 170
<b>F</b>	BATHROOM	250 x 170
<b>G</b>	GUEST TOILET	185 x 175
<b>H</b>	LOBBY	190 x 180

TOTAL AREA - 1,370 SQ FT      127 SQ M

### الشقة ٤ - تفاصيل الشقة بغرفتي نوم:

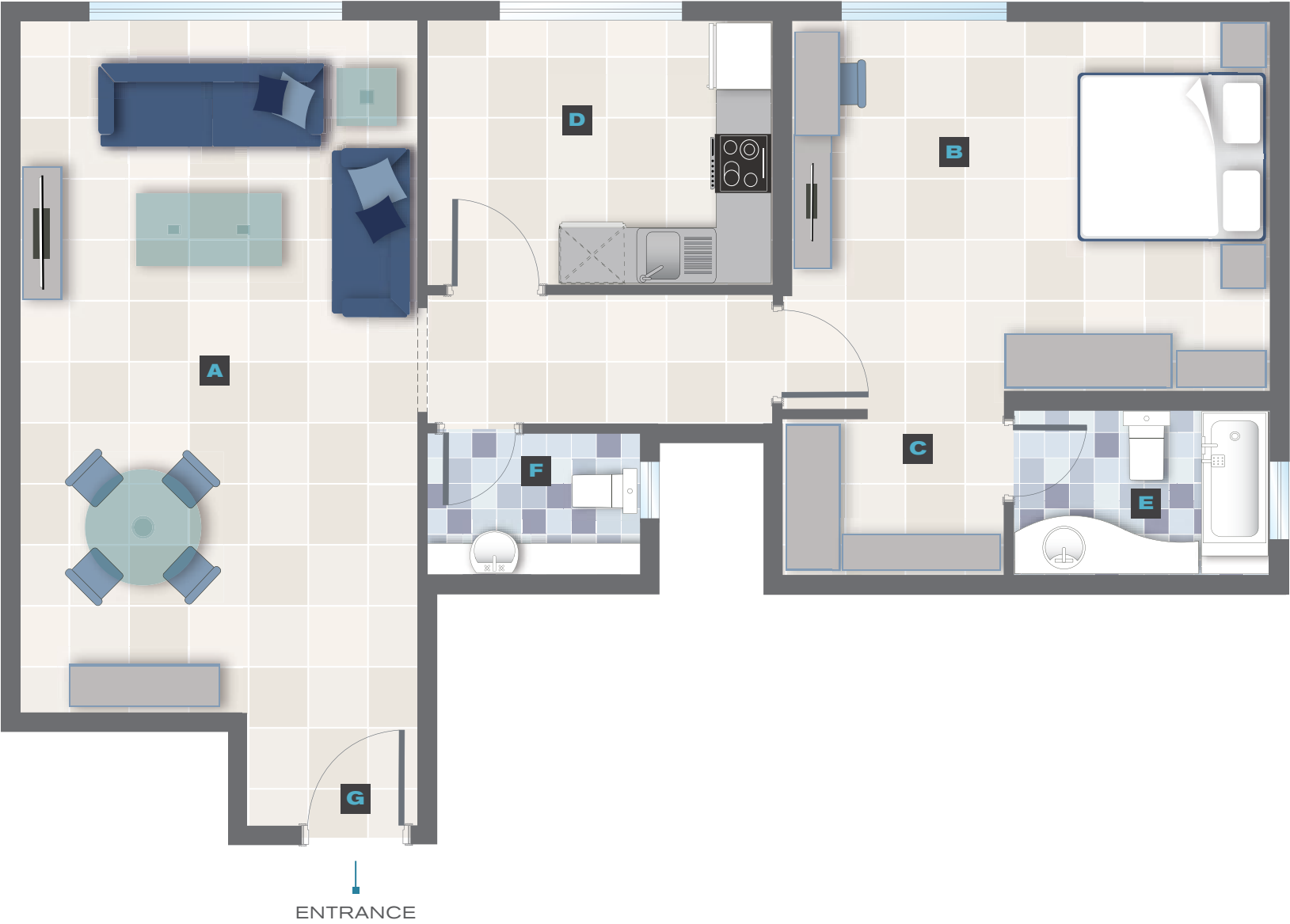
قاعة جلوس وطعام (صالون وسفرة) مع حمام للضيوف، غرفة نوم رئيسية مع حمامها الخاص، غرفة نوم ثانية مع حمام خارجي، مطبخ مجهز بالخزائن.

**FLAT 4 - TWO BEDROOM CONSISTS OF:**  
One master bedroom with an attached bathroom, another bedroom opposite a common bathroom. It has a dining area interconnected with the living room, a separate kitchen and a guest toilet at the lobby.





FLAT 5  
1 BEDROOM FLAT



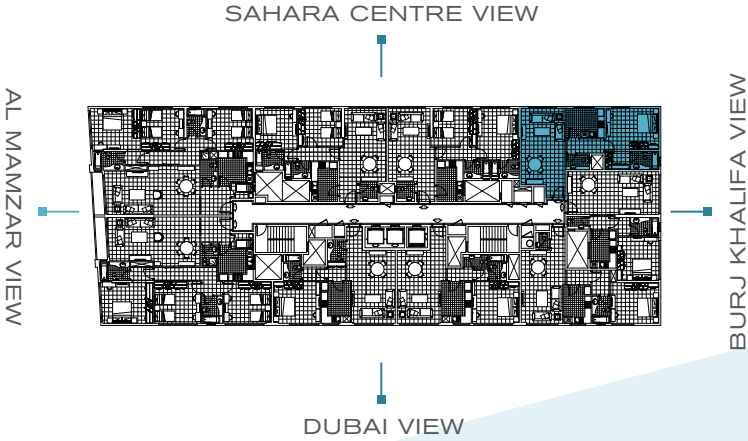
LEGEND

A	LIVING / DINING ROOM	730 x 420
B	MASTER BEDROOM	500 x 400
C	DRESSING ROOM	240 x 165
D	KITCHEN	365 x 280
E	MASTER BATHROOM	270 x 175
F	GUEST TOILET	225 x 150
G	LOBBY	180 x 120

TOTAL AREA - 1,165 SQ FT      108 SQ M

الشقة ه - تفاصيل الشقة بغرفة نوم واحدة:  
قاعة جلوس وطعام (صالون وسفرة) مع حمام للضيوف، غرفة نوم رئيسية مع حمامها الخاص، مطبخ مجهز بالخرائن.

FLAT 5 - ONE BEDROOM CONSISTS OF:  
One bedroom with an attached bathroom and a dressing room, a dining area interconnected with the living room, a separate kitchen and a guest toilet.



# SAHARA TOWER5

## FLAT 6 1 BEDROOM FLAT

### LEGEND

<b>A</b>	LIVING / DINING ROOM	880 x 410
<b>B</b>	MASTER BEDROOM	420 x 400
<b>C</b>	KITCHEN	365 x 250
<b>D</b>	MASTER BATHROOM	270 x 175
<b>E</b>	GUEST TOILET	210 x 120

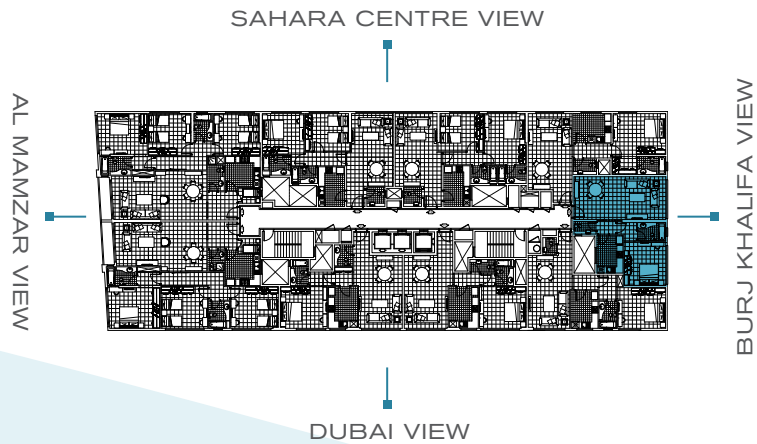
TOTAL AREA - 1,065 SQ FT      99 SQ M

### الشقة ٦ - تفاصيل الشقة بغرفة نوم واحدة:

قاعة جلوس وطعام (صالون وسفرة) مع حمام للضيوف، غرفة نوم رئيسية مع حمامها الخاص، مطبخ مجهز بالخزائن.

### FLAT 6 - ONE BEDROOM CONSISTS OF:

One bedroom with an attached bathroom, a dining area interconnected with the living room, a separate kitchen and a guest toilet.





FLAT 7  
1 BEDROOM FLAT



LEGEND

A	LIVING / DINING ROOM	700 x 420
B	MASTER BEDROOM	460 x 400
C	KITCHEN	360 x 260
D	MASTER BATHROOM	260 x 170
E	GUEST TOILET	160 x 130
F	LOBBY	230 x 130

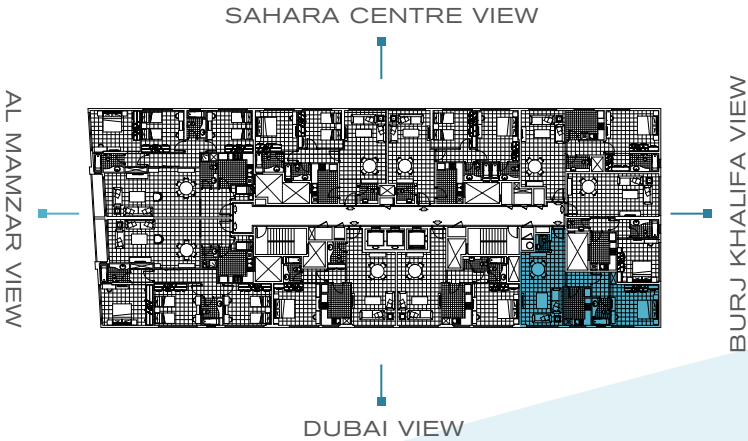
TOTAL AREA - 1,065 SQ FT      99 SQ M

الشقة ٧ - تفاصيل الشقة بغرفة نوم واحدة:

قاعة جلوس وطعام (صالون وسفرة) مع حمام للضيوف، غرفة نوم رئيسية مع حمامها الخاص، مطبخ مجهز بالخزائن.

FLAT 7 - ONE BEDROOM CONSISTS OF:

One bedroom with an attached bathroom, a dining area interconnected with the living room, a separate kitchen and a guest toilet at the lobby.



# SAHARA TOWER5

## FLAT 8 1 BEDROOM FLAT

### LEGEND

<b>A</b>	LIVING / DINING ROOM	700 x 465
<b>B</b>	MASTER BEDROOM	450 x 400
<b>C</b>	KITCHEN	390 x 280
<b>D</b>	MASTER BATHROOM	250 x 170
<b>E</b>	GUEST TOILET	240 x 120
<b>F</b>	LOBBY	230 x 150

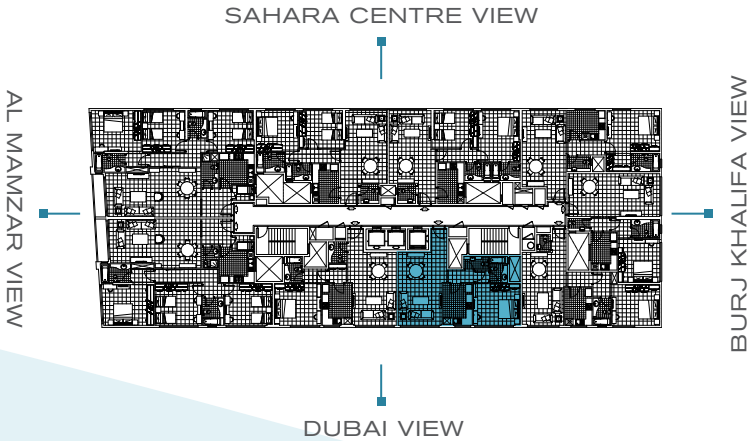
TOTAL AREA - 1,065 SQ FT      99 SQ M

### الشقة ٨ - تفاصيل الشقة بغرفة نوم واحدة:

قاعة جلوس وطعام (صالون وسفرة) مع حمام للضيوف، غرفة نوم رئيسية مع حمامها الخاص، مطبخ مجهز بالخرائن.

### FLAT 8 - ONE BEDROOM CONSISTS OF:

One bedroom, one bathroom, a guest toilet, a separate kitchen, a living room interconnected with the dining area along the lobby.





FLAT 9  
1 BEDROOM FLAT



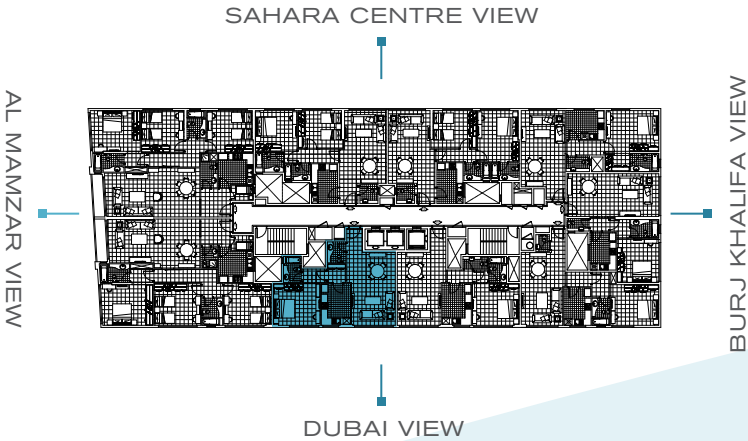
LEGEND

A	LIVING / DINING ROOM	700 x 465
B	MASTER BEDROOM	450 x 400
C	KITCHEN	400 x 280
D	MASTER BATHROOM	250 x 170
E	GUEST TOILET	200 x 175
F	LOBBY	230 x 150

TOTAL AREA - 1,065 SQ FT      99 SQ M

الشقة ٩ - تفاصيل الشقة بغرفة نوم واحدة:  
قاعة جلوس وطعام (صالون وسفرة) مع حمام للضيوف، غرفة نوم رئيسية مع حمامها الخاص، مطبخ مجهز بالخزائن.

FLAT 9 - ONE BEDROOM CONSISTS OF:  
One bedroom, one bathroom, a separate kitchen, a dining area interconnected with the living room, and a guest toilet at the lobby.



## FACILITY MANAGEMENT

As part of a fully-integrated real estate service,  
Al Thuriah provides a host of facilities management services, each customised to meet the evolving needs of your property.

Bringing together years of experience and professional expertise, Al Thuriah offers  
constructive advice & comprehensive solutions  
to ensure a cost-effective service for landlords and tenants.

With a firm emphasis on  
high standards, and all the responsive and preventive policies in place,  
Al Thuriah will manage and enhance every environment through its wide ranging scope of services, from 24-hour maintenance  
(MEP services: Mechanical, Electrical and Plumbing) to round-the-clock security and cleaning.

Al Thuriah eases the burden of protecting & managing your property. Complete peace of mind.

established  
solid trusted







SALES OFFICE

**T:** +971 6 530 4030 **F:** +971 6 530 4300 **P:** 23335 SHARJAH, U.A.E.



ESTABLISHED. SOLID. TRUSTED.

**T:** +971 6 530 2030 **F:** +971 6 530 2220 **P:** 23335 SHARJAH, U.A.E.

[althuriah.com](http://althuriah.com)